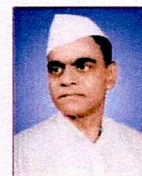




Janata Shikshan Sanstha's KISAN VEER MAHAVIDYALAYA, WAI



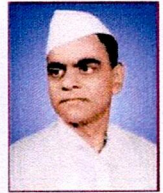
Department of English

Level of Attainment (2023-24)

Level 0	Percentage of student scoring 45 % and above marks is equal to 0 %						
Level 1	Percentage of student scoring 45 % and above marks is greater than 0% but less than 20 %						
Level 2	Percentage of student scoring 45 % and above marks greater than or equal to 20% but less than 40%						
Level 3	Percentage of student scoring 45 % and above marks greater than or equal to 40 %						
Level of attainment by Direct Method (Internal Evaluation and University Exam)							
Class : B.A. III (English) Sem V							
Total no. of students enrolled : 9							
Name of the paper/ course	Internal Evaluation			University Exam			
	No. of students score 45% or more in Home Assignment	% of students Scoring more than 45 % or more in Home Assignment	Level of Attainment (a)	Total No. of Appeared students	No. of student score 45 % or more marks	% of students Scoring more than 45 % or more marks	Level of Attainment
Paper VII	9	100	3	9	2	22.22	2
Paper VIII	9	100	3	9	1	11.11	1
Paper IX	9	100	3	9	4	44.44	3
Paper X	9	100	3	9	4	44.44	3
Paper XI	9	100	3	9	3	33.33	2
Level of attainment by Direct Method (Internal Evaluation and University Exam)							
Class : B.A. III (English) Sem VI							
Total no. of students enrolled : 9							
Name of the paper/ course	Internal Evaluation			University Exam			
	No. of students score 45% or more in Home Assignment	% of students Scoring more than 45 % or more in Home Assignment	Level of Attainment (a)	Total No. of Appeared students	No. of student score 45 % or more marks	% of students Scoring more than 45 % or more marks	Level of Attainment
Paper XII	9	100	3	9	4	44.44	3
Paper XIII	9	100	3	9	8	88.88	3
Paper XIV	9	100	3	9	5	55.55	3
Paper XV	9	100	3	9	6	66.66	3
Paper XVI	9	100	3	9	3	33.33	2
Level of attainment by Indirect Method (Placement, Self Employed, Progression)							
Name of method	No. of students enrolled	No. of students	% of students	Total %	Level of Attainment		
Placement	16	2	12.5	12.5	1		
Progression	16	0	0				
Self employed	16	0	0				



Janata Shikshan Sanstha's
KISAN VEER MAHAVIDYALAYA, WAI.
Department of English



Level of Attainment
2023-24

Name of Course/ Paper	Attainment level in Sem V		Attainment level in Sem VI		Average level of Attainment
	Internal Evaluation	University Examination	Internal Evaluation	University Examination	
Paper VII	3	2	NA	NA	2.5
Paper VIII	3	1	NA	NA	2
Paper IX	3	3	NA	NA	3
Paper X	3	3	NA	NA	3
Paper XI	3	2	NA	NA	2.5
Paper XII	NA	NA	3	3	3
Paper XIII	NA	NA	3	3	3
Paper XIV	NA	NA	3	3	3
Paper XV	NA	NA	3	3	3
Paper XVI	NA	NA	3	2	2.5
Level of attainment by Indirect Method 2 (Placement, Self Employed, Progression)					0
Average Level of Attainment					2.5
The target level of attainment 2.5 is achieved					

Sawant

Professor & Head
Department of English
Kisan Veer Mahavidyalaya, Wai

[Signature]

Coordinator
Internal Quality Assurance Cell
Kisan Veer Mahavidyalaya, Wai
Tal. Wai, Dist. Satara

[Signature]

PRINCIPAL
KISAN VEER MAHAVIDYALAYA
Wai, Dist. Satara